

# Tips for First Time Users

## Permanent License vs. 14-Day Free Trial License

The initial LiveAction software installation includes a 14-day free trial license for a full-featured LiveAction Master Suite for up to 10 devices including QoS, Flow, Routing, and IP SLA. When you load your Free Real-Time Flow permanent license, the software will disable these 10-device Master Suite features and then enable real-time traffic flow monitoring and analysis for up to three devices. If you require any of the other Master Suite features or control of more than three devices, contact [sales@actionpacked.com](mailto:sales@actionpacked.com) to request an upgrade or an extended trial license.

## Choosing your Computer

LiveAction can operate on a standard PC, laptop, or server running Windows Server 2003, XP, or Vista with 200 MB of free disk space (20 GB preferred—see About Disk Space on the next page). To ensure best performance for your application, refer to the *Hardware and Operating System Requirements* in Chapter 1 of the LiveAction Real-Time Flow User Guide.

## Set up Your LiveAction User Accounts

The first time you run LiveAction, the software will prompt you to create an administrator account login. The administrator account has full access to device configuration, monitoring, as well as user management.

## Load and Activate Your Permanent License

Follow the instructions for loading and activating your permanent license as described in Chapter 2 of the LiveAction Real-Time Flow User Guide. Note—LiveAction is only licensed to operate on one computer. If you need to transfer the software to a different PC in the future, you must deactivate your license and then reactivate it on the new PC. Contact [support@actionpacked.com](mailto:support@actionpacked.com) if you need assistance with deactivation.

## Add Devices to your Topology

The first step when using LiveAction is to add devices to your topology using the seven steps in the Add Device wizard.

- To open the Add Device wizard—Click the Add Device icon or select Add New Device from the File menu.
- Note: The default polling rate is 30 seconds—The 10 second rate updates faster but requires more bandwidth.

## How to Navigate the User Interface

### Technology Tabs

Real-Time Flow version has a single Flow tab. Upgrades are available to add QoS, Routing, and IP SLA tabs.

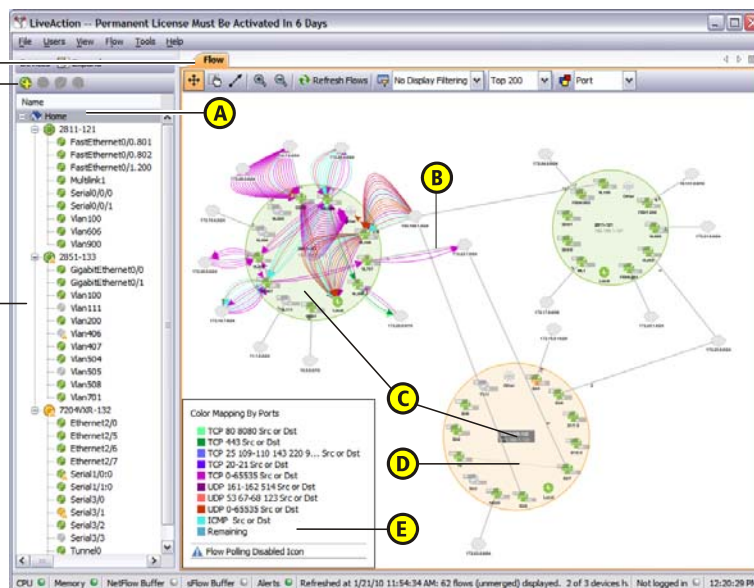
### Add Device Icon

Click here to add another device to the topology view.

### Tree View

Tree view shows the devices you added and their interfaces

- Click on Home to display the topology view in the main window.
- Double-click on a device or interface to display it in the main window.
- Right-click on a device or interface to display its menu options.



### Basic Navigation

- To zoom, use mouse scroll wheel or press [Ctrl] [+ ] and [Ctrl] [-].
- To pan the network, click and drag the background area.
- To move objects, click and drag the object.

### Main Window—(Topology View shown)

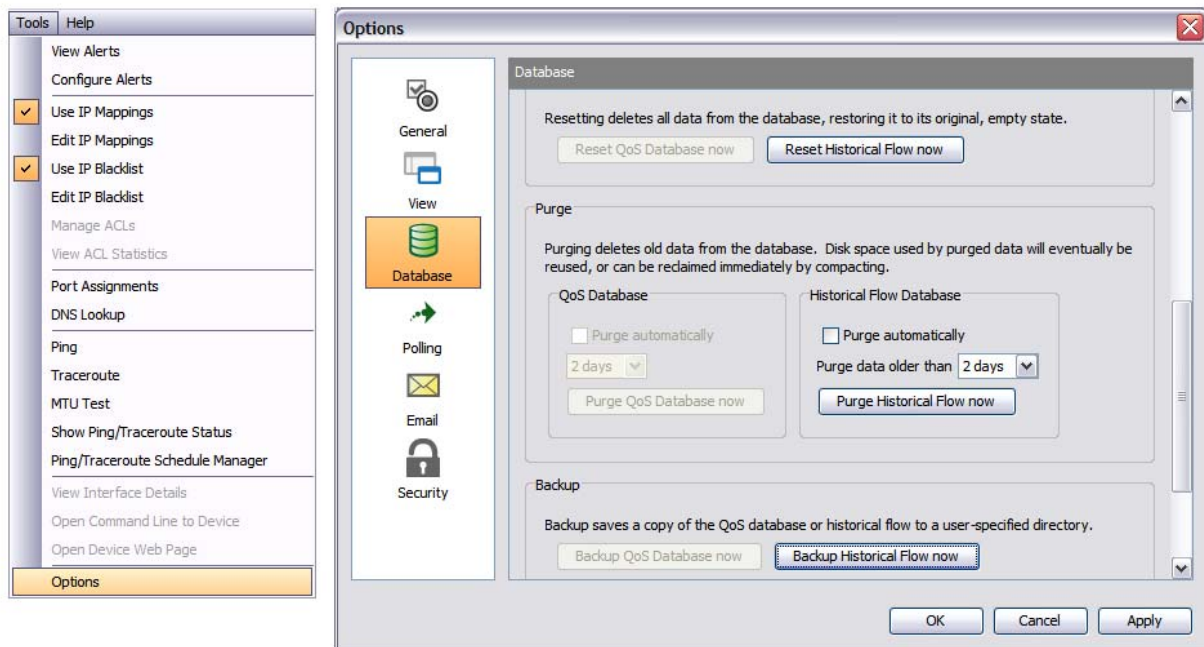
- A—To display the Topology (Home) view, click Home in the Tree view.
- B—Flows appear as curved lines. Click to highlight. Mouse over for details.
- C—Devices appear as large circles. Double-click for device level view.
- D—Interfaces appear as smaller circles. Double-click for interface level view.
- E—Information legend identifies interface items and color coding.

## About Disk Space—20 GB of free space is recommended

Although LiveAction with Real Time Flow does not display historical flow data, it will archive this information on your hard drive in the event you upgrade the software in the future and want to retrieve this data. For this reason we recommend a minimum of 20 GB of free space on your hard drive. If you do not plan to upgrade you can purge the data to conserve disk space.

### How to Purge Your Flow Data

1. Select Options from the Tools Menu
2. Click on "Database" icon
3. Select the age of the data you want to purge
4. Select purge option
  - Click "Purge automatically" for unattended purging
  - Click Purge Historical Flow now to purge the data manually



### Enable Polling for NetFlow

NetFlow polling is turned off by default and must be enabled per device to view this data.

- To enable polling, right click on the device from the tree view to display the device's drop down menu.
- Select "NetFlow/Enable NetFlow Polling"

### Complete Your Flow Setup

LiveAction automatically sets the Flow commands for most devices. However configurations among different devices may vary. To ensure LiveAction properly receives NetFlow packets from your Cisco devices, we recommend that you add the following to your router configuration file using the command line interface (CLI). You can access the CLI directly from the View menu in LiveAction.

```
config t
ip flow-export source <interface>
(<interface> is the IP address of the interface used to access the router)
```

*For more responsive NetFlow performance, you can also add the following commands.*

```
ip flow-cache timeout active 1
ip flow cache timeout inactive 10
```