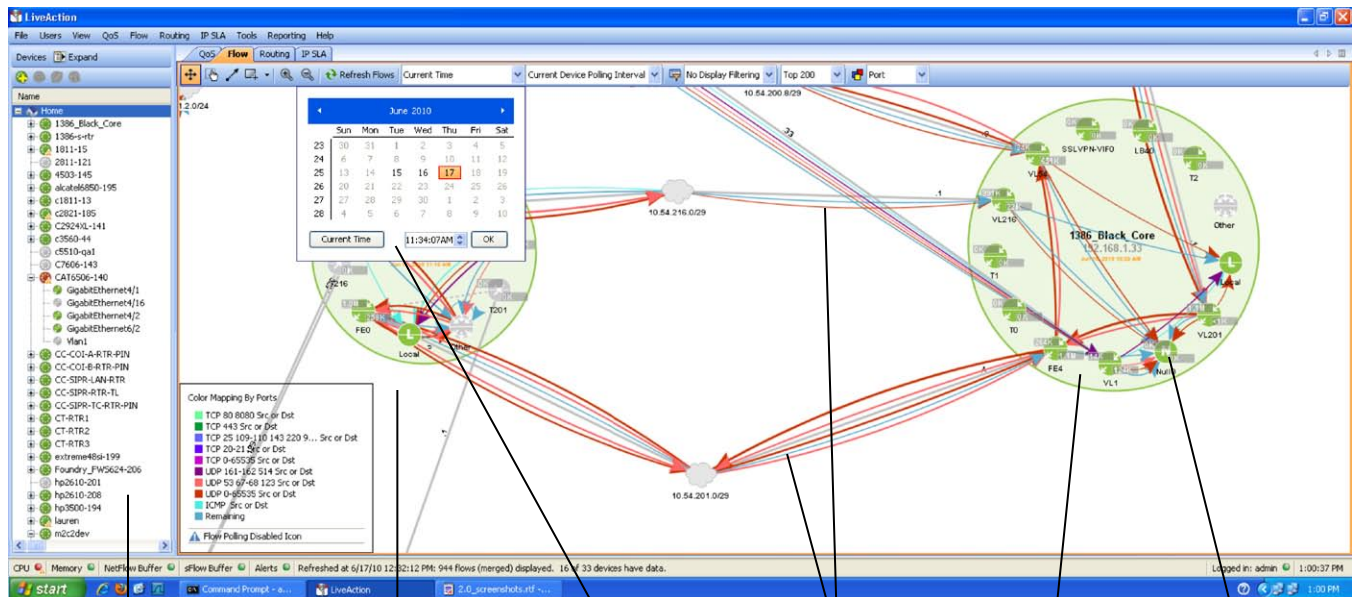


# LiveAction™ Flow

## Advanced Network Flow Visualizations and Monitoring



### Hierarchical View

Left side of screen shows devices and interfaces in a hierarchical view.

### Real Time Network Topology

Right side of screen shows devices (large circles), interfaces (small colored circles), interconnections, flows, interface bandwidth, congestion, and more.

### System-wide Historical Controls

View end-to-end historical flows from any day and with different levels of aggregation.

### Flows

Curved lines indicate traffic flows. Click to trace from source to destination.

### Devices

Large circles indicate devices (routers and switches). Small circles indicate interfaces.

### Interfaces

Top half indicates input. Lower half indicates output. Numbers indicate bandwidth.

**L**iveAction Flow is a software module that provides advanced end-to-end system level flow visualizations as well as detailed internal router and interface views and graphs. The software enables IT engineers to quickly set up and view flow information on their networks. LiveAction Flow supports Cisco NetFlow, Juniper Networks J-Flow, and InMon sFlow.

### Why LiveAction Flow?

LiveAction Flow starts with a network topology view that provides a crystal clear view of live traffic activity across the network. From this topology view, users can quickly drill down to individual devices or interfaces for more detail. This unique approach makes it easy to find troublesome spots on the network and allows users to switch effortlessly to other LiveAction modules such as LiveAction QoS, Routing, and IP SLA.

Because the volume of flow data can be overwhelming, LiveAction provides numerous filtering options to tailor the information presented on the screen. LiveAction is one of the few applications that support Cisco MIB polling to ensure real-time data viewing.

In addition to live views, LiveAction also captures historical flow data on a continuous basis so you can recreate detailed traffic flow conditions for any date and time you specify.

### Key Features and Benefits

- Ease of use—LiveAction’s intuitive graphical interface replaces complicated command lines to make on-the-fly monitoring fast, easy and understandable.
- Replay individual captured flow data from any date or time to view activity and problems exactly as they occurred.
- Intuitive topology views—Literally “see” your flows across the network from source to destination.
- Faster troubleshooting and root cause analysis—In the topology view, use color coded flows, point and click filters and visual path tracing to identify traffic. Double-clicking devices drills down and provides detailed flow information in sortable columns and provides more detailed information with multiple viewing options.
- Summarize relevant information with advanced filtering and HTML reports.
- Observe the effects of routing changes on network traffic and flows in real time.
- Improve operator efficiency through advanced visualization of real-time encrypted traffic at the system, network, router, enclave, COI, and application-class levels.
- Enhance security by using real-time monitoring to identify unauthorized traffic and denial of service (DoS) attacks. Right-click on a flow to create an ACL instantly.

# Features and Specifications

## Features

- Topology-based, end-to-end flow view
- NetFlow v9 and Flexible NetFlow support, including IPv6 source, destination, and next hop addresses, and flow label; ASN source and destination; MAC source and destination addresses and VLANs; TCP flags; and NBAR application
- Aggregate flow or individual flow views
- Display end points as host IP address, host name, application port name or number
- Filter top N or bottom N flows in topology and device views
- X-Ray view of flows inside router
- Sophisticated filtering for matching combinations of protocol type, IP addresses, DSCP values and more
- Over 25 built-in reports for top talkers, address dissemination, aggregation and more
- Works in MIB and Collector modes
- Sortable flow table
- Start, stop and pause flow data
- Adjustable flow polling rates
- Flow graph—by port, by source or destination address
- Built in DNS name resolution
- Historical capture of all flows at full data rate with instant playback
- NetFlow, J-Flow and sFlow support

## Benefits

- Faster troubleshooting of the network
- View flows across the network
- Pinpoint entry and exit of flows
- Acquire understanding of flow paths
- Tag and observe blacklisted traffic
- Perform forensic traffic analysis
- Observe routing and other router changes and effects

## Devices Supported

- Cisco Series Routers\*—800, 1700, 1800, 2600, 2600XM, 2800, 3600, 3700, 3800, 7200, 7600
- Cisco Series Switches\*—Catalyst 6500, 4500, and 3000 series switches.
- Cisco ASA Security Appliances running version 8.3
- J-Flow and sFlow devices

\*IOS 12.3, 12.4; IOS 12.2 for 7600 and Cat 6500 series

## LiveAction Technology Module Options with Flow

- Flow module
- Monitor Suite: QoS (monitor only), Flow, Routing
- Master Suite: QoS, Flow, Routing, IP SLA

## System Requirements

- Windows-based PC with network connection (visit our web site for current system requirements)



ActionPacked! Networks  
 550 Paiea Street, Suite 222, Honolulu, HI 96819  
 +1 888-881-1116  
 www.actionpacked.com info@actionpacked.com

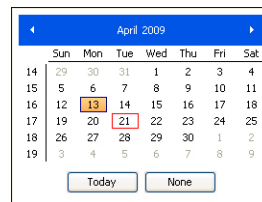
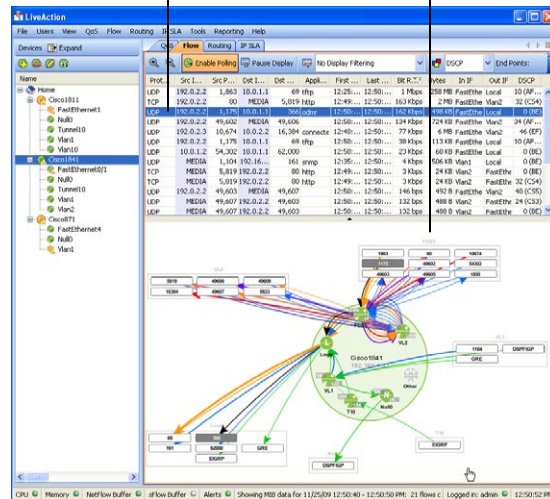
## Warranty and Support

- 90 day warranty and support including free upgrades
- Online technical support
- Annual software maintenance plans available

## Device Level Flow Views

Device view shows flows through each interface. Flows can be grouped by IP address, port, or port application.

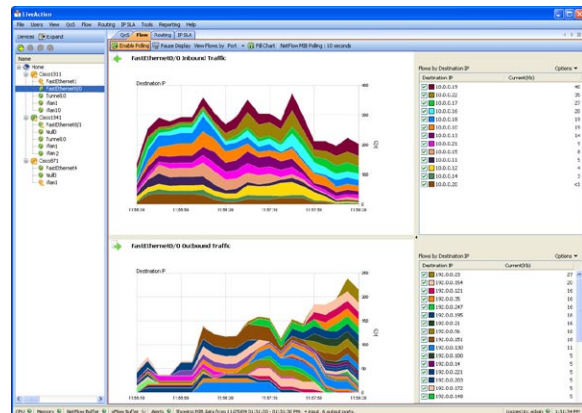
Detailed flow data appears in tabular format on top half of screen. Data can be displayed by IP address, port, or port application.



**Historical Device Level View**  
 Every single flow record is captured at 10 second intervals on a daily basis so you can recreate detailed flow conditions for any date and time you specify.

## Interface Level Flow Views

See detailed views of flows for individual interfaces. Flows are charted on a timeline and can be displayed based on port, DSCP, and inbound or outbound IP addresses.



© 2010 ActionPacked! Networks. All rights reserved. ActionPacked!, the ActionPacked! logo, and LiveAction are trademarks of ActionPacked! Networks. Cisco is a registered trademark of Cisco Systems, Inc. Juniper Networks is a registered trademark of Juniper Networks, Inc. sFlow is a registered trademark of InMon Corp. Information subject to change without notice.